

## **HTC Touch Pro Photos Guide – dismantling and removing the cameras**

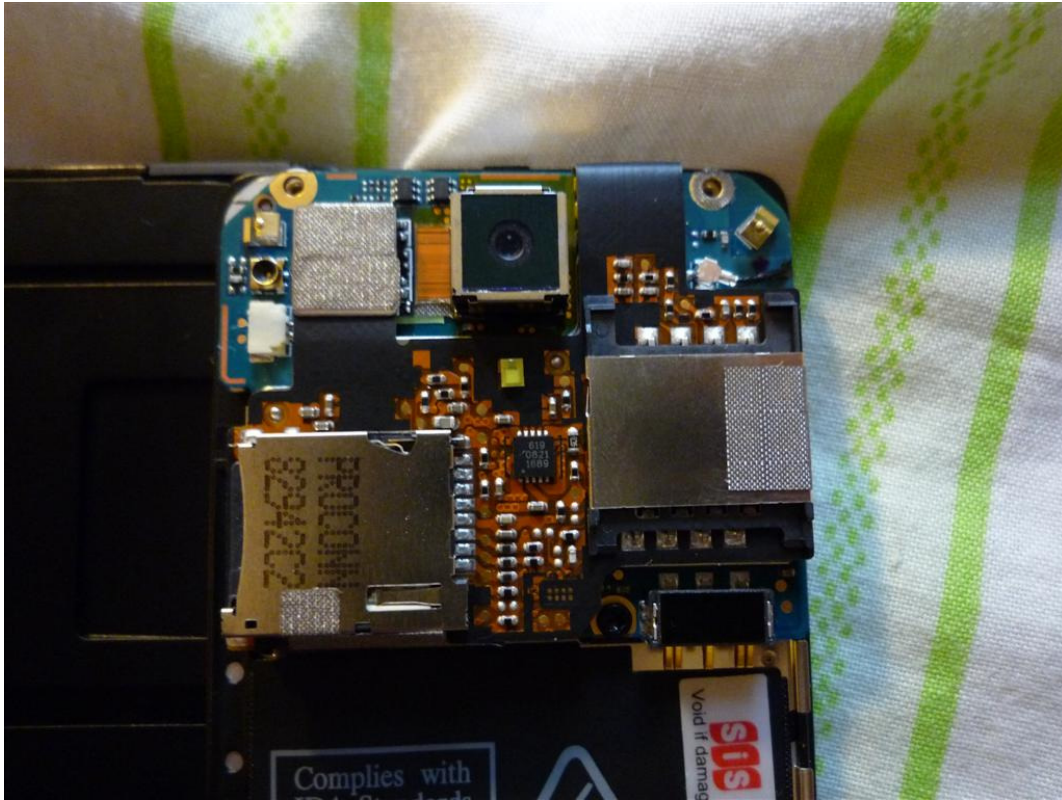
### **Tools Required**

- Small Philips Screw Driver (Optical glasses type)
- Small Flat head screw driver (used to pry things)
- Torq 5 (??) screwdriver (Only required to unscrew 1 torq screw)
- Some finger nails to pry open the back casing!

There are only 4 screws holding together the back casing of the HTC touch pro. (2 at the top and 2 at the bottom). Just remove those 4 screws and then slide your finger nails around the gap and the case will open. Spend a little more time on the bottom of the case (i.e. near the USB port). Note: there is a small connector at the top left of the back PCB which connects to the speaker on the back cover. (See the photo at the end of this guide) Carefully disconnect it from the socket to remove the back cover completely.



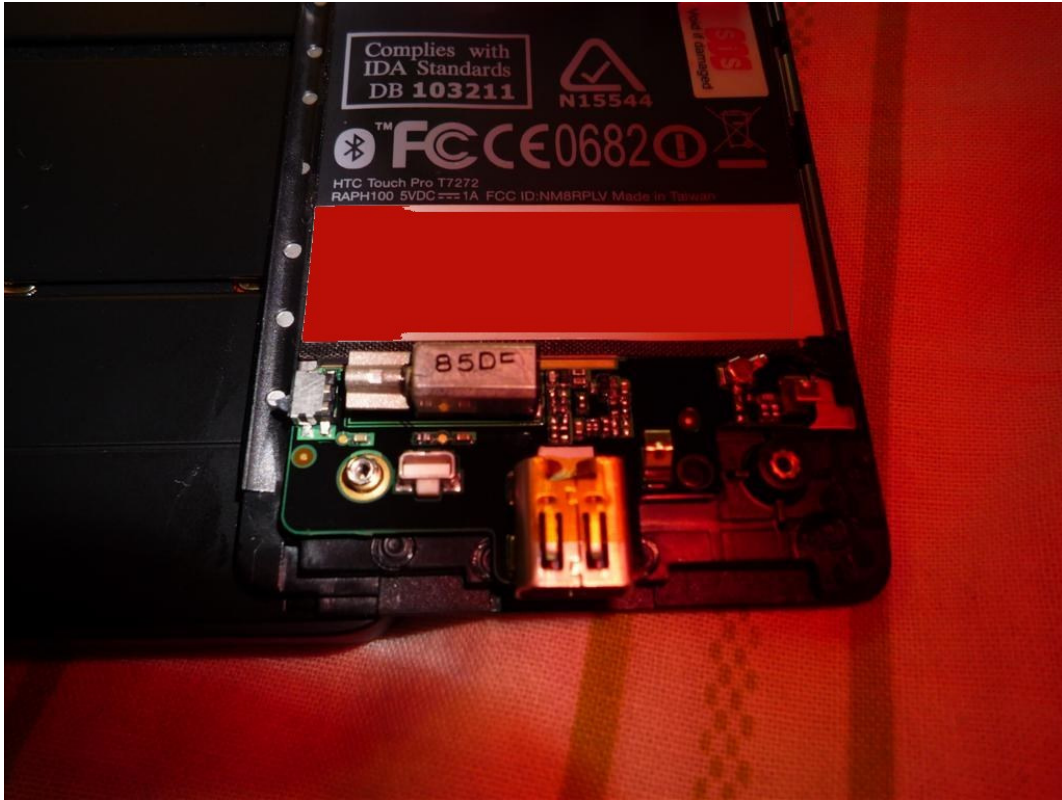
The above photo shows the back casing removed.



Close up photo of the top PCB. The Torq screw (black) is just below the Sim Card holder! (i.e. left side of the battery connector)



Another photo of the top PCB. You can see the torq screw clearly in the above photo (next to the battery connector).



A photo of the bottom PCB where the antenna cable is connected (top right).

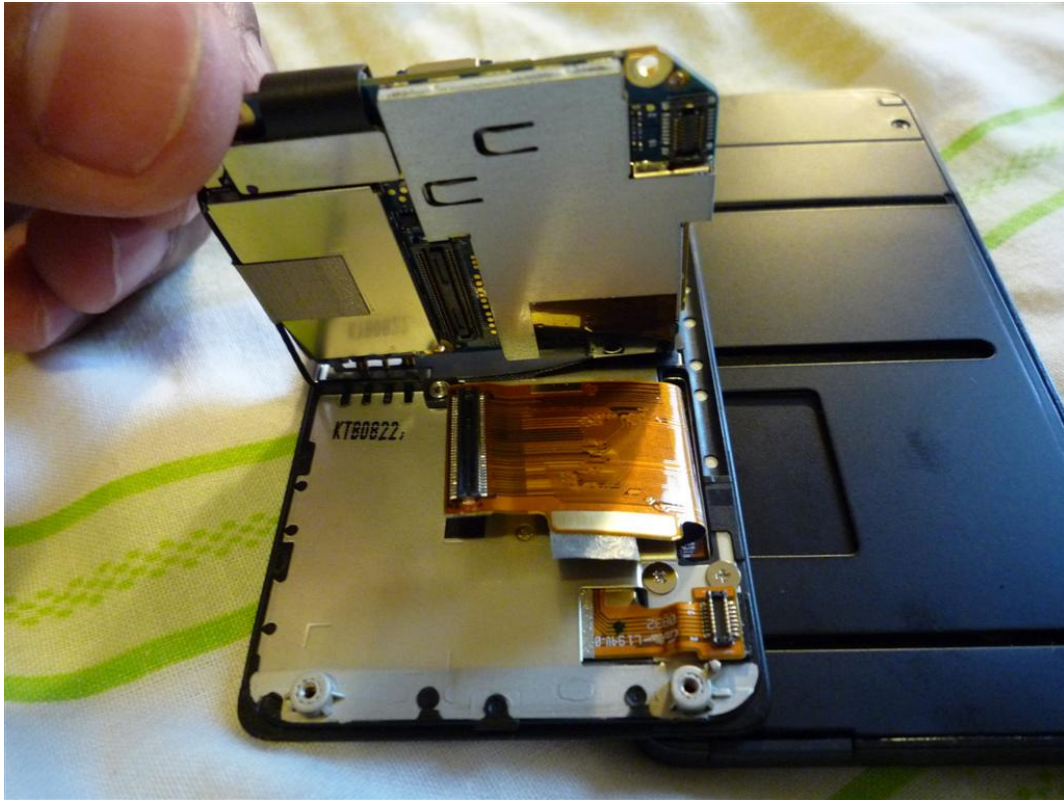




Another photo of the top PCB (top view).



A complete photo of the Touch pro with the back cover removed.



The above photo, shows the back of the Top PCB. There are 3 connectors (centre, top and bottom right side) which easily prys off. To get to this part you will need to take out that torq screw.

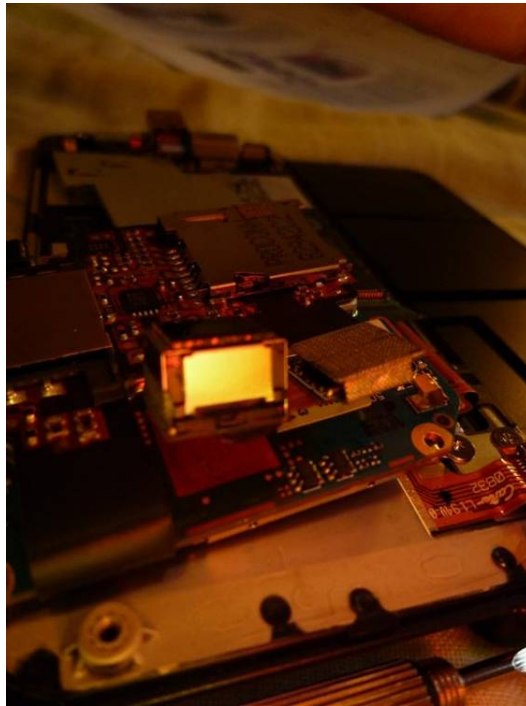


The above photo, shows the clearly the back of the top PCB and you can see clearly the 3 connectors (centre, top and bottom left side). The right side of the photo shows a metal case. This can be removed by prying around the metal marks (-) and lifting it away. This is to get access to the bottom of the camera module.



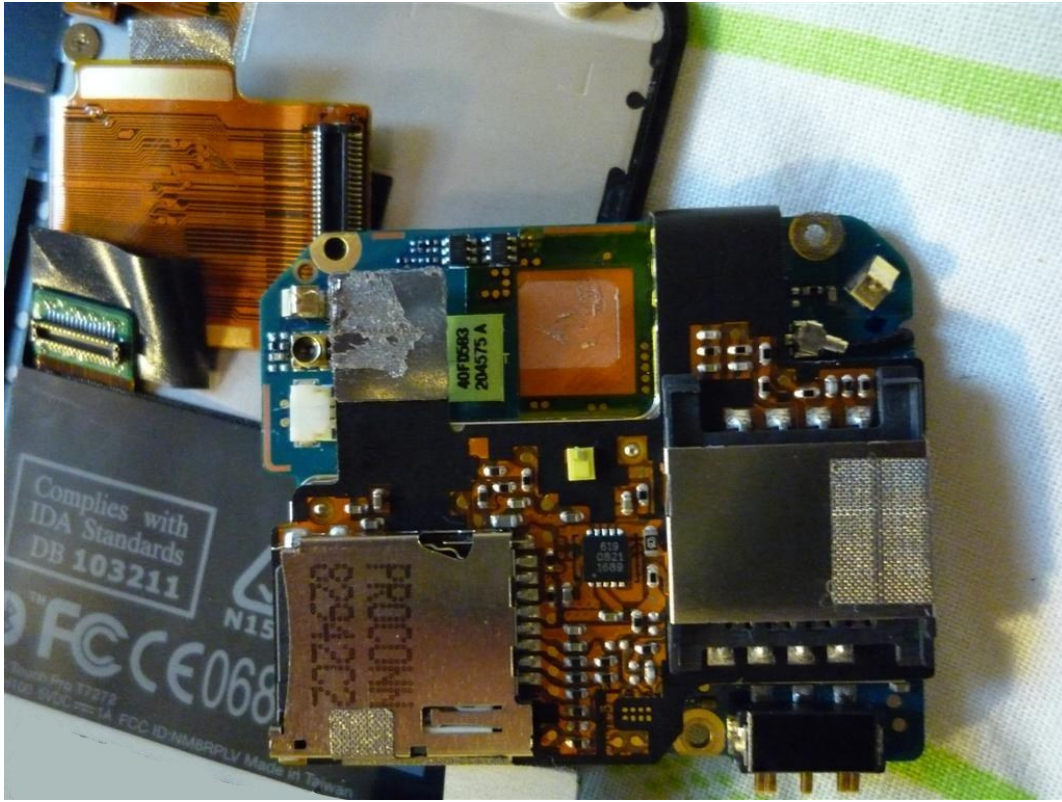


The above and below photos shows the camera module has been pryed off the PCB (is stuck down with a little sticky tape which when using some leverage and a small screwdriver will lift up). The connector from the camera is wrapped in insulating tape. This can be peeled off to release the camera connector and the camera.





The above photo shows the camera module only. You can see the insulating tape and the connector.



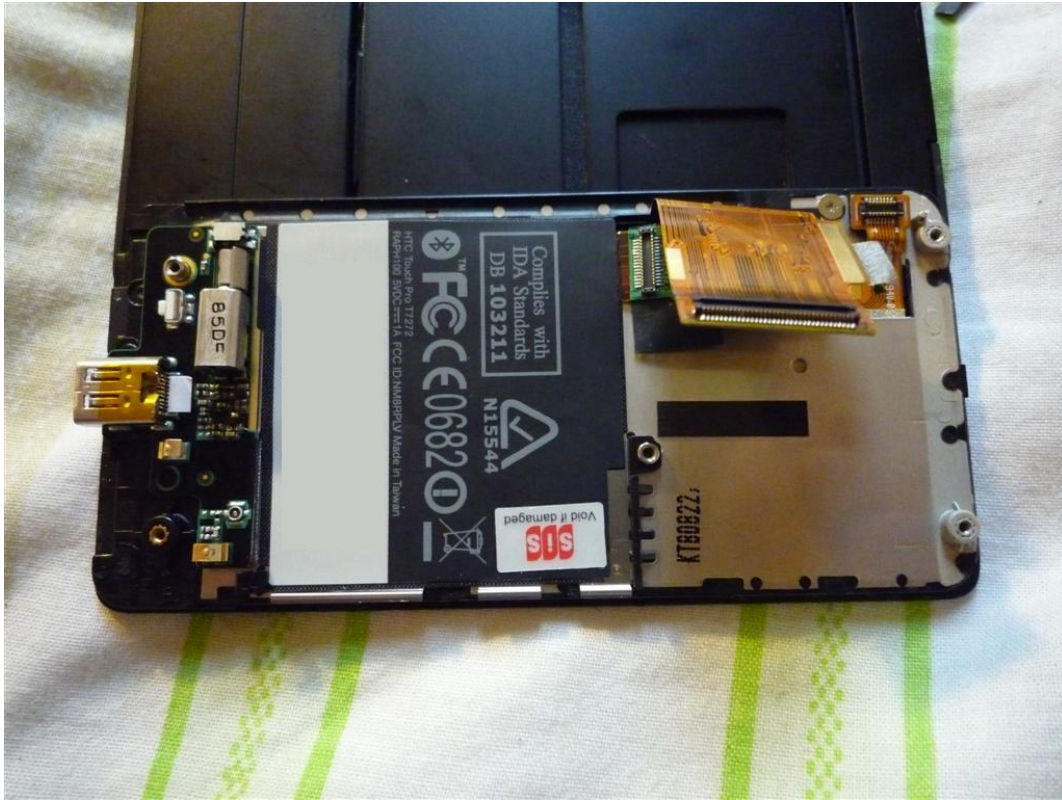
The above photo shows back PCB without the camera module . Note: the antenna cable on the top right of the PCB. Follow that cable to the bottom PCB and just unclip that antenna connector from there to separate the PCB completely from the device. (I unclipped the bottom PCB antenna cable because the top one has some tape holding it in place).





The above photo shows the metal case cover which was dismantled earlier to get access to the back of the camera module . You can also see the dangling antenna cable at the bottom centre of the photo which sits in a special metal guide.





A photo of the back of the touch pro without the top PCB. Note: the top right screw (silver colour). This is one of the screws which holds the keyboard module in place. Unscrew that and the centre 4 more screws (see later photo) to separate the keyboard part from the LCD part.



A photo of the separated top PCB with the antenna cable and the metal cover



The above photo shows the 4 screws holding the sliding module of the keyboard in place. (centre). To get access to these 4 screws, carefully lift up the ribbon cable which is under then FCC sticker. Unscrew these screws and the top right screw (see earlier photo) to separate the keyboard part from the LCD part.



The photo above shows the front part (LCD) of the touch pro separated from the back part (Keyboard)



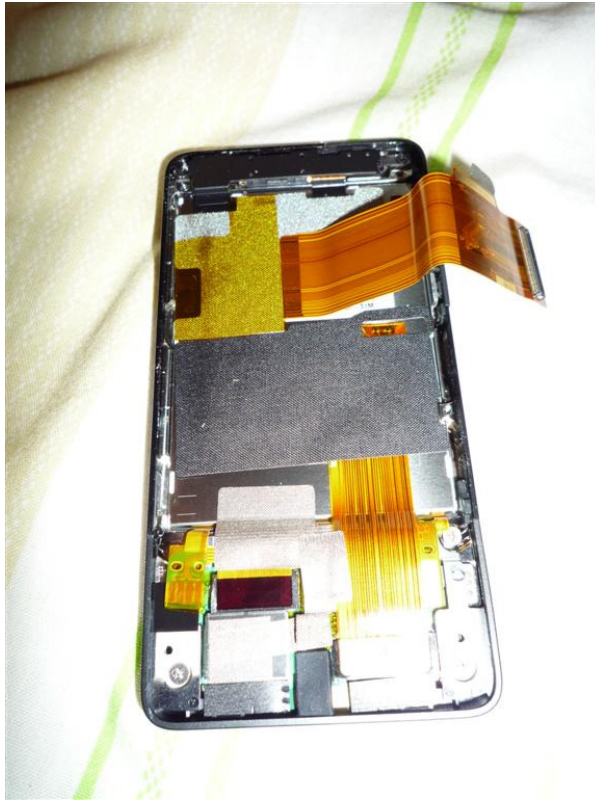


The above photo shows the top back cover of the LCD part removed. This is removed by unscrewing 2 screws and lifting this part away.

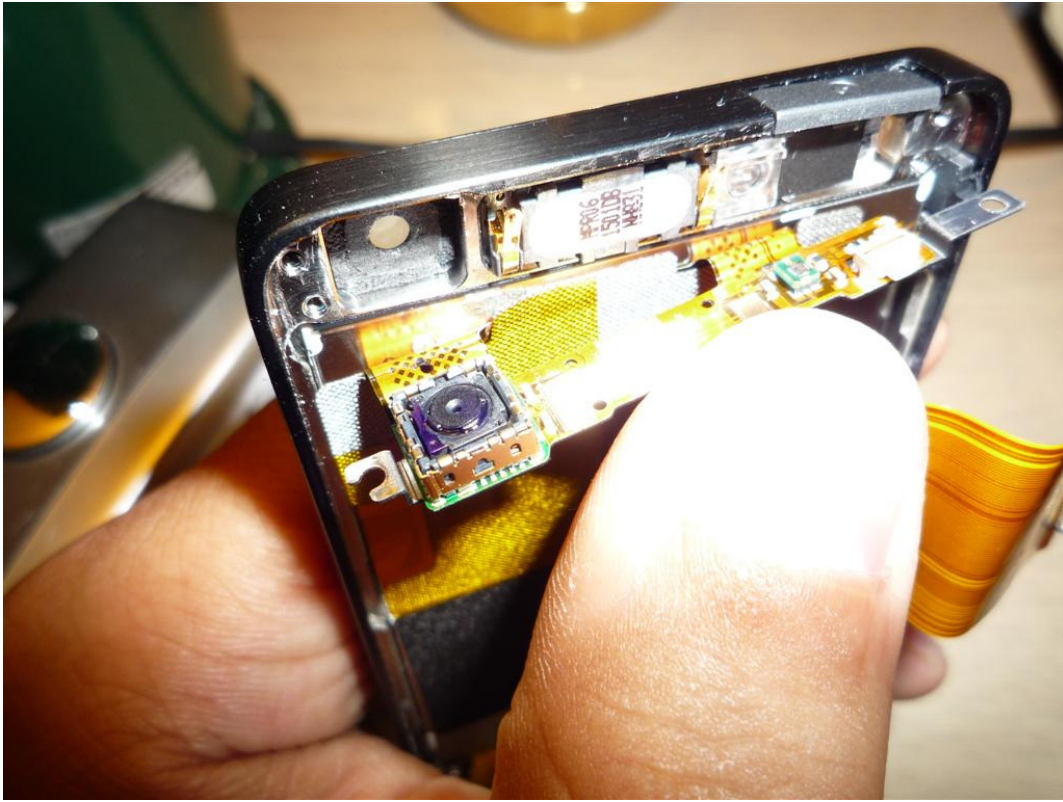
Under the keyboard sliding mechanism there are 2 screws to remove and another 1 on the left side to get access to the back of the LCD module. Slide your fingernails around the casing of the back cover to separate the keyboard sliding mechanism.



A photo of the keyboard sliding module separated from the LCD part.



A photo of the LCD part only.

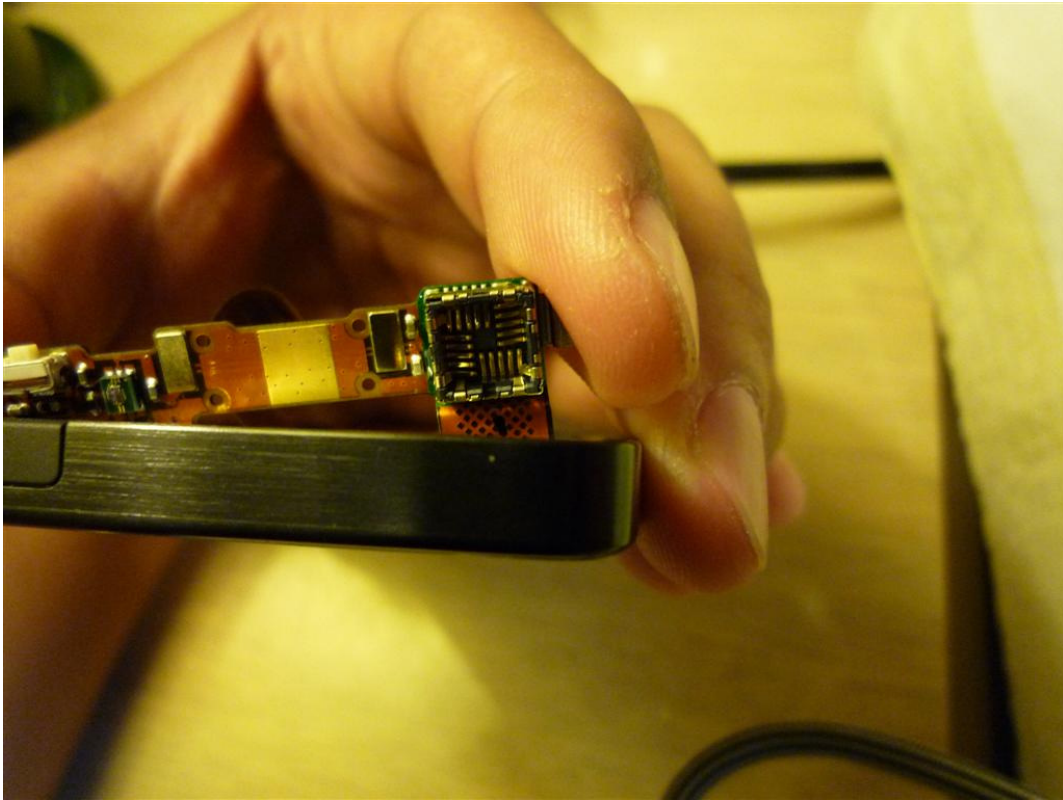


A close up photo of the front camera module. There was a screw holding it back on the top right side.





Another close up photo of the front camera module. The camera is inside a “Zif” kindof socket, just pry the camera out with a small flat head screw driver.



A close up photo of the empty camera's Zif socket.

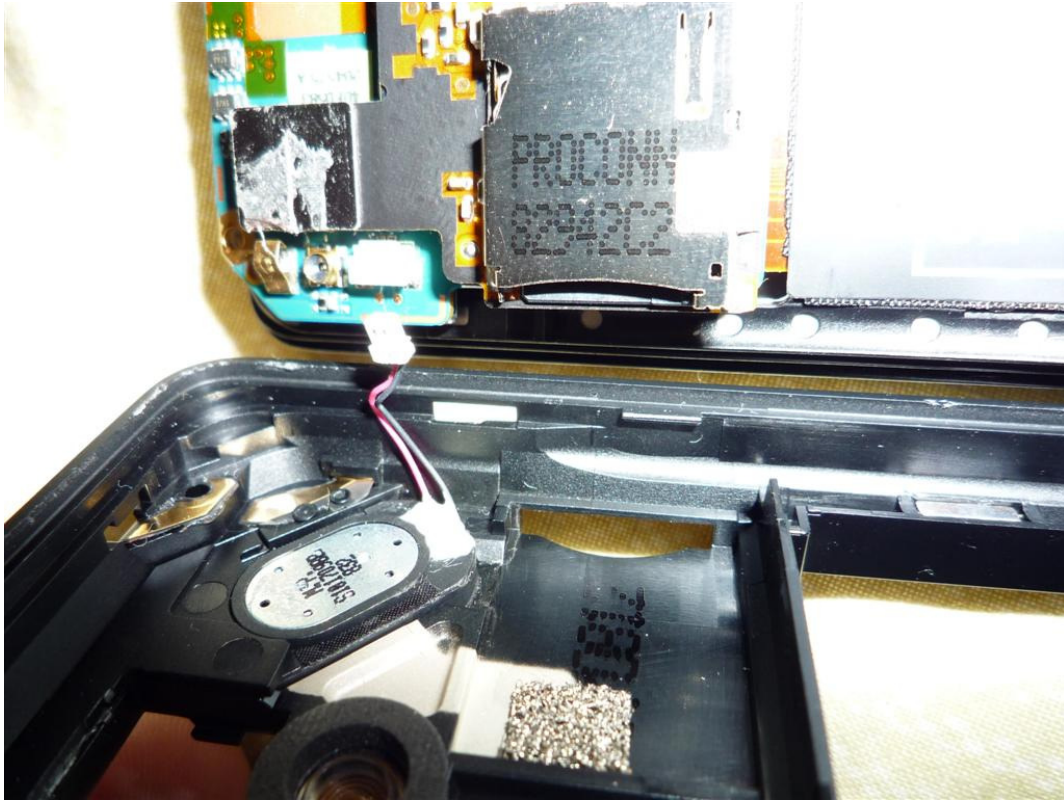


A close up photo of the camera removed from the camera's Zif socket.



A photo of the Touch Pro put back together except for the back cover.





A close up photo of the speaker connector located on the back cover of the Touch Pro. Just clip it back in.



Photo of the unit back together (without the rear camera)



Close up photo of the top of the unit (without the rear camera)